



# Extra Challenge

I can use rounding to check answers to problems.



- 1) If the rounded answer is 560, what could the question be? Give three different examples.
  - a. \_\_\_\_\_
  - b. \_\_\_\_\_
  - c. \_\_\_\_\_
  
- 2) If the rounded answer is 1200, what could the question be? Give three different examples.
  - a. \_\_\_\_\_
  - b. \_\_\_\_\_
  - c. \_\_\_\_\_
  
- 3) Use rounding and estimation to match the calculation to the answer.

$$(4.6 \times 5.7) + 52.59$$

$$4692 \div 46$$

$$672 \div 3.5$$

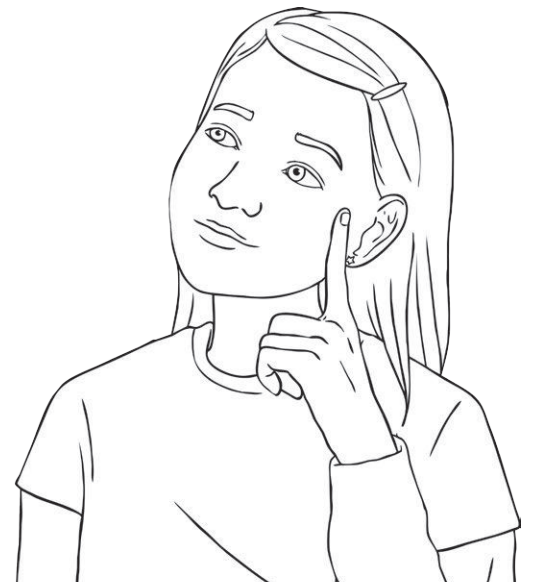
$$182.25 - 142.58$$

192

78.81

39.67

102





# Extra Challenge Answers

Question	Answer												
1.	If the rounded answer is 560, what could the question be? Give three different examples.												
<i>Various answers</i>													
2.	If the rounded answer is 1200, what could the question be? Give three different examples.												
<i>Various answers</i>													
3.	Use rounding and estimation to match the calculation to the answer.												
<table border="0"><tbody><tr><td data-bbox="248 815 743 891"><math>(4.6 \times 5.7) + 52.59</math></td><td data-bbox="743 815 1002 891"></td><td data-bbox="1002 815 1501 891">192</td></tr><tr><td data-bbox="248 920 743 996"><math>4692 \div 46</math></td><td data-bbox="743 920 1002 996"></td><td data-bbox="1002 920 1501 996">78.81</td></tr><tr><td data-bbox="248 1025 743 1102"><math>672 \div 3.5</math></td><td data-bbox="743 1025 1002 1102"></td><td data-bbox="1002 1025 1501 1102">39.67</td></tr><tr><td data-bbox="248 1131 743 1207"><math>182.25 - 142.58</math></td><td data-bbox="743 1131 1002 1207"></td><td data-bbox="1002 1131 1501 1207">102</td></tr></tbody></table>		$(4.6 \times 5.7) + 52.59$		192	$4692 \div 46$		78.81	$672 \div 3.5$		39.67	$182.25 - 142.58$		102
$(4.6 \times 5.7) + 52.59$		192											
$4692 \div 46$		78.81											
$672 \div 3.5$		39.67											
$182.25 - 142.58$		102											



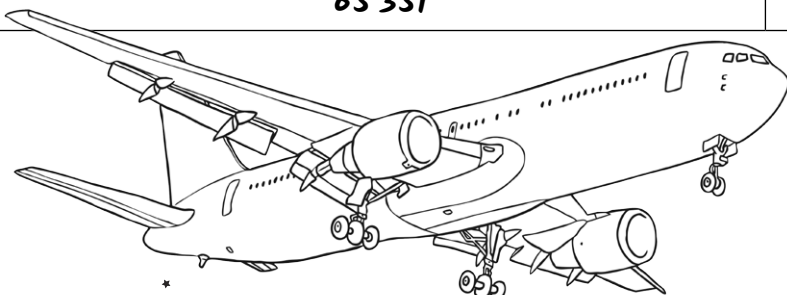
# Home Learning

I can use rounding to check answers to problems.



Check the answers on the home learning task using rounded approximation. Are the calculations correct? If not, correct the answer.

Question													
<p>The table below shows the number of passengers flying to Dublin during four days.</p> <table border="1"> <thead> <tr> <th>Day</th> <th>Number of passengers</th> </tr> </thead> <tbody> <tr> <td>Monday</td> <td>384 592</td> </tr> <tr> <td>Tuesday</td> <td>483 271</td> </tr> <tr> <td>Wednesday</td> <td>25 483</td> </tr> <tr> <td>Thursday</td> <td>47 184</td> </tr> </tbody> </table> <p>What was the total number of passengers? <b>940 530</b></p>		Day	Number of passengers	Monday	384 592	Tuesday	483 271	Wednesday	25 483	Thursday	47 184	<p>Rounded approximation</p>	<p>Does the answer look correct?</p>
Day	Number of passengers												
Monday	384 592												
Tuesday	483 271												
Wednesday	25 483												
Thursday	47 184												
		Correct answer if required											
<p>During September, the following in-flight meals were ordered.</p> <table border="1"> <thead> <tr> <th>Food</th> <th>Number of dishes ordered</th> </tr> </thead> <tbody> <tr> <td>Cottage Pie</td> <td>32 544</td> </tr> <tr> <td>Chicken Sandwich</td> <td>3636</td> </tr> <tr> <td>Snack Pack</td> <td>15 795</td> </tr> <tr> <td>Soup</td> <td>3356</td> </tr> </tbody> </table> <p>What was the total number of dishes ordered? <b>65 351</b></p>		Food	Number of dishes ordered	Cottage Pie	32 544	Chicken Sandwich	3636	Snack Pack	15 795	Soup	3356	<p>Rounded approximation</p>	<p>Does the answer look correct?</p>
Food	Number of dishes ordered												
Cottage Pie	32 544												
Chicken Sandwich	3636												
Snack Pack	15 795												
Soup	3356												
		Correct answer if required											





The airline decided to give information to its passengers on its latest destination, Iceland:

Place	Population
Reykjavik	258 894
Akureyri	75 785
Egilsstadir	46 948

What is the combined population of the three cities?  
**1 434 679**

Rounded approximation

Does the answer look correct?

Correct answer if required

A passenger wants to buy some teddy bears on a flight. Each teddy costs £9.67.

How much would it cost for 17 teddy bears?  
**£164.39**

Rounded approximation

Does the answer look correct?

Correct answer if required

The table shows the number of films viewed during flights to America.

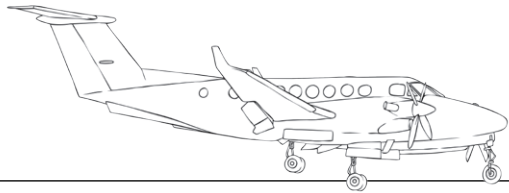
Destination	Films watched
Los Angeles	54 495
New York	437 934
Boston	145 349

How many films were viewed altogether?  
**637 778**

Rounded approximation

Does the answer look correct?

Correct answer if required



The airline mascot has been travelling around the country to promote the company. The table shows the distance travelled on each journey.

Journey	Distance travelled (km)
1	9495
2	15 374
3	16 312
4	38 356

What is the average distance travelled?

**79 537km**

Rounded approximation

Does the answer look correct?

Correct answer if required

The table below shows the total number of flights scheduled and the number of flights that had to be cancelled due to bad weather.

Total number of flights	Flights that had to be cancelled
946 402	174 593

How many flights managed to take off?

**771 809**

Rounded approximation

Does the answer look correct?

Correct answer if required

The table below shows the number of passengers flying to Edinburgh during four days.

Day	Number of Passengers
Monday	543
Tuesday	983
Wednesday	1390
Thursday	540

Each passenger donated £3 to the airline's chosen charity. How much money was raised?

**£12 000**

Rounded approximation

Does the answer look correct?

Correct answer if required



# Home Learning Answers

Question	Answer	
Check the answers on the home learning task using rounded approximation. Are the calculations correct? If not, correct the answer.		
<p>The table below shows the number of passengers flying to Dublin during four days.</p> <p>What was the total number of passengers?</p> <p><b>940 530</b></p>	Rounded approximation	Does the answer look correct?
	<i>Child's own calculation</i>	<b>Yes</b>
	Correct answer if required	
<p>During September, the following in-flight meals were ordered.</p> <p>What was the total number of dishes ordered?</p> <p><b>65 351</b></p>	Rounded approximation	Does the answer look correct?
	<i>Child's own calculation</i>	<b>No</b>
	Correct answer if required	
	<b>55 331</b>	
<p>The airline decided to give information to its passengers on its latest destination, Iceland:</p> <p>What is the combined population of the three cities?</p> <p><b>1 434 679</b></p>	Rounded approximation	Does the answer look correct?
	<i>Child's own calculation</i>	<b>No</b>
	Correct answer if required	
	<b>381 627</b>	
<p>A passenger wants to buy some teddy bears on a flight. Each teddy costs £9.67.</p> <p>How much would it cost for 17 teddy bears?</p> <p><b>£164.39</b></p>	Rounded approximation	Does the answer look correct?
	<i>Child's own calculation</i>	<b>Yes</b>
	Correct answer if required	
<p>The table shows the number of films viewed during flights to America.</p> <p>How many films were viewed altogether?</p> <p><b>637 778</b></p>	Rounded approximation	Does the answer look correct?
	<i>Child's own calculation</i>	<b>Yes</b>
	Correct answer if required	



<p>The airline mascot has been travelling around the country to promote the company. The table shows the distance travelled on each journey.</p> <p>What is the average distance travelled?</p> <p><b>79 537km</b></p>	Rounded approximation	Does the answer look correct?
	<i>Child's own calculation</i>	<b>No</b>
	Correct answer if required	
	<b>19 884.25km</b>	
<p>The table below shows the total number of flights scheduled and the number of flights that had to be cancelled due to bad weather.</p> <p>How many flights managed to take off?</p> <p><b>771 809</b></p>	Rounded approximation	Does the answer look correct?
	<i>Child's own calculation</i>	<b>Yes</b>
	Correct answer if required	
<p>The table below shows the number of passengers flying to Edinburgh during four days.</p> <p>Each passenger donated £3 to the airline's chosen charity. How much money was raised?</p> <p><b>£12 000</b></p>	Rounded approximation	Does the answer look correct?
	<i>Child's own calculation</i>	<b>No</b>
	Correct answer if required	
	<b>£10 368</b>	



What is the sum of 4 294 469,  
482 949 and 38 495?

$$\begin{array}{r} 4\ 294\ 469 \\ +\ 482\ 949 \\ +\ 38\ 495 \\ =\ 3\ 815\ 913 \end{array}$$



What is 592 582 less  
than 1 238 531?

$$\begin{array}{r} 1\ 238\ 531 \\ -\ 592\ 582 \\ =\ 645\ 949 \end{array}$$



What is the total of 27 lots  
of 4703?

$$\begin{array}{r} 27 \\ \times\ 4703 \\ =\ 129\ 681 \end{array}$$



A store had 5 828 582 comics.  
3 489 588 comics were sold  
throughout September.  
How many were left in the store  
at the end of September?

$$\begin{array}{r} 5\ 828\ 582 \\ -\ 3\ 489\ 588 \\ =\ 2\ 338\ 994 \end{array}$$



$$4400 \div 50 =$$

$$4400$$

$$\div 50$$

$$= 102$$



What is the total of 48 929  
and 49 284?

$$48929$$

$$+ 49284$$

$$108213$$



$$79 \times 5 =$$

$$79$$

$$\times 5$$

$$= 395$$



$$198 \times 22 =$$

$$198$$

$$\times 22$$

$$= 4356$$





# Home Learning Answers

Question	Answer		
Check the answers on the card using a rounded approximation. Are the calculations correct?			
Question	What is the calculation?	Rounded approximation	Does the calculation look correct?
What is the sum of 4 294 469, 482 949 and 38 495?	$4\,294\,469 + 482\,949 + 38\,495 = 3\,815\,913$	<i>Child's own calculation</i>	<i>Incorrect</i>
What is 592 582 less than 1 238 531?	$1\,238\,531 - 592\,582 = 645\,949$	<i>Child's own calculation</i>	<i>Correct</i>
What is the total of 27 lots of 4703?	$27 \times 4703 = 129\,681$	<i>Child's own calculation</i>	<i>Incorrect</i>
A store had 5 828 582 comics. 3 489 588 comics were sold throughout September. How many were left in the store at the end of September?	$5\,828\,582 - 3\,489\,588 = 2\,338\,994$	<i>Child's own calculation</i>	<i>Correct</i>
$4400 \div 50 =$	$4400 \div 50 = 102$	<i>Child's own calculation</i>	<i>Incorrect</i>
What is the total of 48 929 and 49 284?	$48\,929 + 49\,284 = 108\,213$	<i>Child's own calculation</i>	<i>Incorrect</i>
$79 \times 5 =$	$79 \times 5 = 395$	<i>Child's own calculation</i>	<i>Correct</i>
$198 \times 22 =$	$198 \times 22 = 4356$	<i>Child's own calculation</i>	<i>Correct</i>



# Home Learning Record Sheet

I can use rounding to check answers to problems.



Check the answers on the card using a rounded approximation. Are the calculations correct?

Question	What is the calculation?	Rounded approximation	Does the calculation look correct?
What is the sum of 4 294 469, 482 949 and 38 495?			
What is 592 582 less than 1 238 531?			
What is the total of 27 lots of 4703?			
A store had 5 828 582 comics. 3 489 588 comics were sold throughout September. How many were left in the store at the end of September?			
$4400 \div 50 =$			
What is the total of 48 929 and 49 284?			
$79 \times 5 =$			
$198 \times 22 =$			